

2018

22ND ANNUAL DELTA ASSOCIATES
Multifamily Market Overview & Awards For Excellence
Washington/Baltimore

AWARDS FOR EXCELLENCE



2018

22ND ANNUAL DELTA ASSOCIATES
Multifamily Market Overview & Awards For Excellence
Washington/Baltimore

APARTMENT AWARDS



BEST LEASE-UP PACE FOR A BALTIMORE APARTMENT COMMUNITY

2018

22ND ANNUAL DELTA ASSOCIATES
Multifamily Market Overview & Awards For Excellence
Washington/Baltimore



TENM.FLATS

Columbia, MD

- + Kettler
- + Howard Hughes Corp.

BEST LEASE-UP PACE FOR A SUBURBAN MARYLAND APARTMENT COMMUNITY (TIE)

2018

22ND ANNUAL DELTA ASSOCIATES
Multifamily Market Overview & Awards For Excellence
Washington/Baltimore



THE REMY

Lanham, MD

- + Berman Enterprises LP
- + LIVEbe Communities



BEST LEASE-UP PACE FOR A SUBURBAN MARYLAND APARTMENT COMMUNITY (TIE)

2018

22ND ANNUAL DELTA ASSOCIATES
Multifamily Market Overview & Awards For Excellence
Washington/Baltimore



EVOLUTION AT TOWNE CENTRE LAUREL

Laurel, MD

+ Wood Partners



BEST LEASE-UP PACE FOR A NORTHERN VIRGINIA APARTMENT COMMUNITY

2018

22ND ANNUAL DELTA ASSOCIATES
Multifamily Market Overview & Awards For Excellence
Washington/Baltimore



THE THORNTON

Alexandria, VA

+ Foulger-Pratt



BEST LEASE-UP PACE FOR A DISTRICT OF COLUMBIA APARTMENT COMMUNITY

2018

22ND ANNUAL DELTA ASSOCIATES
Multifamily Market Overview & Awards For Excellence
Washington/Baltimore

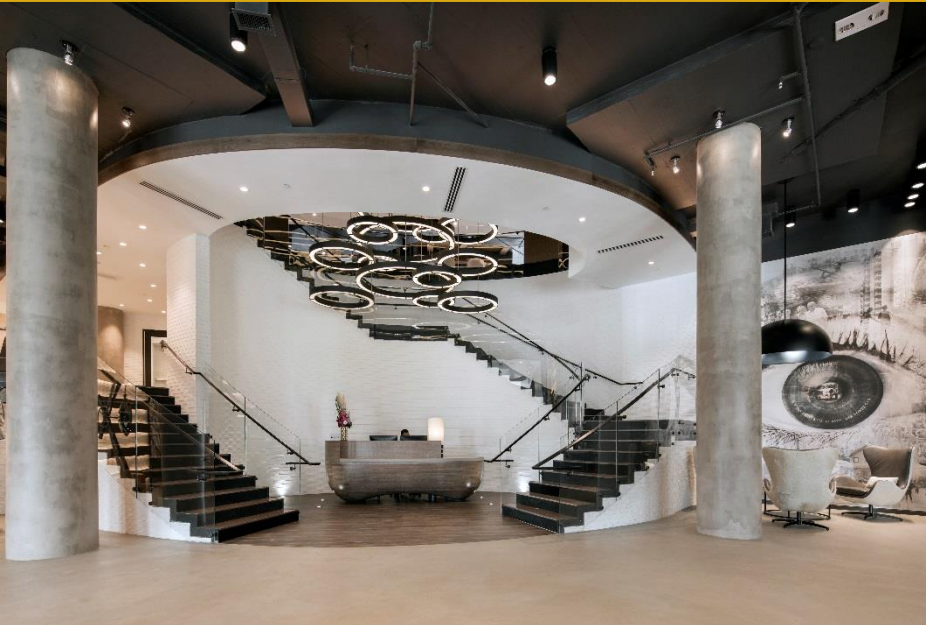


AGORA AT THE COLLECTIVE

Washington, DC

+ William C. Smith & Co.





APERTURE RESTON STATION

Reston, VA

- + The Bozzuto Group
- + Chuck A. Veatch
- + RD Jones & Associates
- + KTG Y Group, Inc.
- + Urban Engineering & Associates, Inc.
- + Lee & Associates, Inc.



TEN AT CLARENDON

Arlington, VA

- + CRC Companies LLC
- + CRC Property Management LLC
- + Hirsch Bedner Associates
- + Bonstra | Haresign Architects

BEST WASHINGTON/BALTIMORE INNOVATIVE APARTMENT COMMUNITY

2018

22ND ANNUAL DELTA ASSOCIATES
Multifamily Market Overview & Awards For Excellence
Washington/Baltimore



880 P

Washington, DC

- + Roadside Development
- + The Bozzuto Group
- + Shalom Baranes Associates
- + Clark Construction





SAWYER FLATS

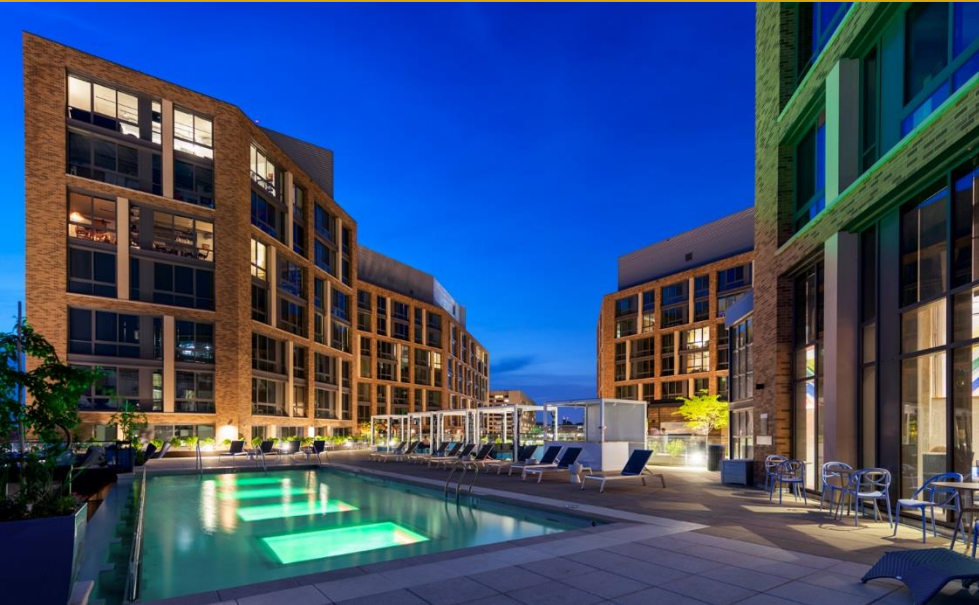
Gaithersburg, MD

- + Grosvenor Americas
- + Thrive Communities
- + Streetsense

BEST WASHINGTON/BALTIMORE MIXED-USE APARTMENT COMMUNITY

2018

22ND ANNUAL DELTA ASSOCIATES
Multifamily Market Overview & Awards For Excellence
Washington/Baltimore



THE CHANNEL

Washington, DC

- + PN Hoffman
- + Madison Marquette
- + The Bozzuto Group
- + Perkins Eastman





THE MODERN AT ART PLACE

Washington, DC

- + Cafritz Foundation
- + The Bozzuto Group
- + Shalom Baranes Associates
- + Vika Capitol
- + Parker Rodriguez
- + Cornerstone

BEST WASHINGTON/BALTIMORE ADAPTIVE REUSE APARTMENT COMMUNITY

2018

22ND ANNUAL DELTA ASSOCIATES
Multifamily Market Overview & Awards For Excellence
Washington/Baltimore



LEGACY WEST END

Washington, DC

- + Tasea Investment Co.
- + Kettler
- + Hartman Design Group
- + MTFA Architecture
- + HITT Contracting
- + Eagle Bank
- + Old Line Bank
- + Federal Capital Partners

BEST WASHINGTON/BALTIMORE BOUTIQUE APARTMENT COMMUNITY

2018

22ND ANNUAL DELTA ASSOCIATES
Multifamily Market Overview & Awards For Excellence
Washington/Baltimore



13|U

Washington, DC

- + JBG SMITH
- + Champalimaud
- + David M. Schwarz Architects
- + BBGM
- + Fifth Third Bank
- + Santander



THE VINE

Laurel, MD

- + BUCH LLLP
- + Buch Construction
- + Foundation Development Group
- + The Bozzuto Group
- + Hartman Design Group
- + Henneman Architects



HANOVER CROSS STREET

Baltimore, MD

- + The Hanover Company
- + Design Collective, Inc.
- + W Partnership



THE RESIDENCES AT EASTERN MARKET

Washington, DC

- + Eastbanc, Inc.
- + Stanton Development
- + Jamestown
- + Clark Enterprises
- + The Bozzuto Group
- + Weinstein Studio/Gensler



414 LIGHT STREET

Baltimore, MD

- + Questar
- + Kari Whitman Interiors
- + Solomon Cordwell Buenz





SIGNATURE

Reston, VA

- + Boston Properties
- + The Bozzuto Group
- + Hartman Design Group
- + Shalom Baranes Associates
- + HITT Contracting



2018

22ND ANNUAL DELTA ASSOCIATES
Multifamily Market Overview & Awards For Excellence
Washington/Baltimore

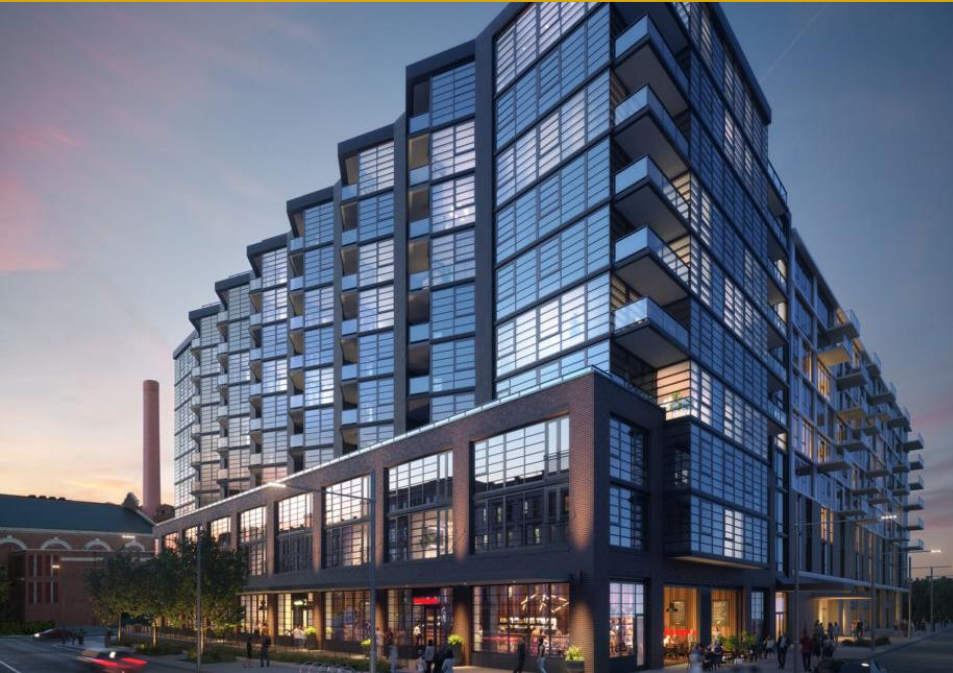
CONDOMINIUM AWARDS



BEST SALES PACE FOR A WASHINGTON/BALTIMORE CONDOMINIUM COMMUNITY (TIE)

2018

22ND ANNUAL DELTA ASSOCIATES
Multifamily Market Overview & Awards For Excellence
Washington/Baltimore



THE BOWER

Washington, DC

+ PN Hoffman



BEST SALES PACE FOR A WASHINGTON/BALTIMORE CONDOMINIUM COMMUNITY (TIE)

2018

22ND ANNUAL DELTA ASSOCIATES
Multifamily Market Overview & Awards For Excellence
Washington/Baltimore

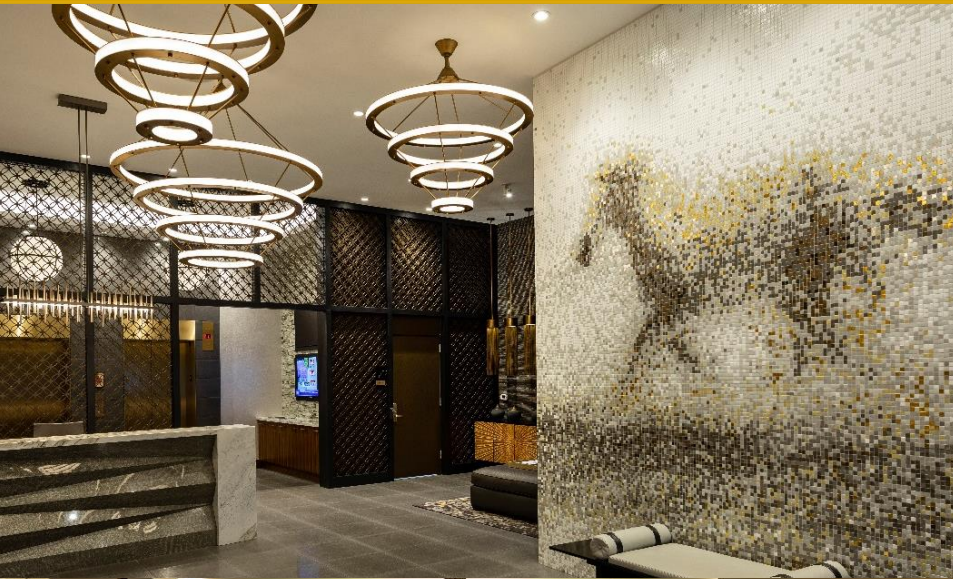


THE HAVEN AT NATIONAL HARBOR

National Harbor, MD

- + Peterson Companies
- + McWilliams | Ballard





CHEVAL BETHESDA

Bethesda, MD

- + Duball, LLC
- + Starr Capital
- + McWilliams | Ballard
- + Hartman Design Group
- + SK+I Architectural Design Group
- + The Resmark Companies

BEST WASHINGTON/BALTIMORE ADAPTIVE REUSE CONDOMINIUM COMMUNITY

2018

22ND ANNUAL DELTA ASSOCIATES
Multifamily Market Overview & Awards For Excellence
Washington/Baltimore



BUCHANAN SCHOOL

Washington, DC

- + Ditto Residential
- + McWilliams | Ballard
- + SK+I Architectural Design Group
- + Quinn Evans
- + Parker Rodriguez

BEST WASHINGTON/BALTIMORE BOUTIQUE CONDOMINIUM COMMUNITY

2018

22ND ANNUAL DELTA ASSOCIATES
Multifamily Market Overview & Awards For Excellence
Washington/Baltimore



THE ADELE

Washington, DC

- + Red Multifamily Development
- + ELLISDALE Construction
- + Urban Pace



BEST WASHINGTON/BALTIMORE MID-RISE CONDOMINIUM COMMUNITY

2018

22ND ANNUAL DELTA ASSOCIATES
Multifamily Market Overview & Awards For Excellence
Washington/Baltimore



2501 M

Washington, DC

- + PRP – Real Estate Investment Management
- + The Mayhood Company
- + Olvia Demetriou
- + CORE Architecture + Design
- + Santander

BEST WASHINGTON/BALTIMORE HIGH-RISE CONDOMINIUM COMMUNITY

2018

22ND ANNUAL DELTA ASSOCIATES
Multifamily Market Overview & Awards For Excellence
Washington/Baltimore



VIO

Washington, DC

- + PN Hoffman
- + Madison Marquette
- + WDG
- + Handel Architects LLC
- + BrandLinkDC





FOUR SEASONS HOTEL AND RESIDENCES BALTIMORE

Baltimore, MD

- + Harbor East Management Group
- + H&S Properties Development Corp.
- + Prime Building Advantage
- + Beatty Harvey Coco Architects

