



DELTA ASSOCIATES'

Market Overview & Awards For Excellence

AWARDS FOR EXCELLENCE



BEST LEASE-UP PACE FOR A NORTHERN VIRGINIA APARTMENT COMMUNITY



DELTA ASSOCIATES'

Market Overview & Awards For Excellence



THE WITMER

Arlington, VA

- + Kimco Realty
- + Bozzuto Management
- + WDG Architecture
- + WDG Interiors
- + Parker Rodriguez



BEST LEASE-UP PACE FOR A SUBURBAN MARYLAND APARTMENT COMMUNITY



DELTA ASSOCIATES'

Market Overview & Awards For Excellence



BAINBRIDGE LAKE LINGANORE

Frederick, MD

- + Bainbridge
- + Preston Drake Architects



BEST LEASE-UP PACE FOR A DISTRICT OF COLUMBIA APARTMENT COMMUNITY



DELTA ASSOCIATES'
Market Overview & Awards For Excellence



THE KELVIN

Washington, DC

- + Jair Lynch
- + Bozzuto Management
- + Hord Coplan Macht
- + Blackrock

BEST LEASE-UP PACE FOR A BALTIMORE APARTMENT COMMUNITY



THE WEXLEY AT 100

Elkridge, MD

- + The Braun Family
- + Security Development
- + Wood Partners
- + Wood Residential Services
- + Poole & Poole Architecture
- + Studio 5

BEST WASHINGTON/BALTIMORE INTERIOR DESIGN APARTMENT COMMUNITY



DELTA ASSOCIATES'
Market Overview & Awards For Excellence



THE WAYCROFT

Arlington, VA

- + Saul Centers, Inc.
- + David M. Schwarz Architects
- + WDG Architects
- + Northwestern Mutual



BEST WASHINGTON/BALTIMORE INNOVATIVE APARTMENT COMMUNITY



DELTA ASSOCIATES'
Market Overview & Awards For Excellence



WEST HALF

Washington, DC

- + JBG SMITH
- + ODA Architects
- + Eric Colbert and Associates
- + V Starr
- + HITT Contracting



BEST WASHINGTON/BALTIMORE RENOVATED APARTMENT COMMUNITY



WATER PARK TOWERS

Arlington, VA

- + Equity Residential
- + WDG Architecture
- + Spectrum Inc. General Contractors

BEST WASHINGTON/BALTIMORE NEIGHBORHOOD IMPACT APARTMENT COMMUNITY



DELTA ASSOCIATES'
Market Overview & Awards For Excellence



AVRA & CIRRO AT CENTER\WEST

Baltimore, MD

- + La Cité Development
- + J Davis Architects
- + Gensler
- + KeyBank
- + Goldman Sachs
- + BRP
- + City of Baltimore Housing Department
- + Mayor and City Council of Baltimore
- + State of MD

BEST WASHINGTON/BALTIMORE MIXED-USE APARTMENT COMMUNITY



DELTA ASSOCIATES'

Market Overview & Awards For Excellence



RISE & BOLDEN AT THE BORO

Tysons, VA

- + KETTLER
- + The Meridian Group
- + Shalom Baranes Associates
- + Perkins Eastman
- + RD Jones
- + LDI
- + Capital One
- + Artemis
- + Streetsense
- + Vika

BEST WASHINGTON/BALTIMORE ADAPTIVE REUSE APARTMENT COMMUNITY



MISSION LOFTS

Falls Church, VA

- + Highland Square Holdings
- + Avenue5 Residential
- + Lord Aeck Sargent
- + Landworks Studio
- + Carlyn and Company
- + Sabrina Cabada
- + Citizens Bank
- + Parse Capital
- + Vika
- + Cherry Lane
- + Hurst Engineering

BEST WASHINGTON/BALTIMORE LOW-RISE APARTMENT COMMUNITY



THE BOTTLING PLANT

Frederick, MD

- + Brick Lane
- + Catocin Overlook
- + Oculus Realty
- + GTM Architects
- + Sandy Spring Bank
- + NV Capital Advisors
- + Revite Construction
- + Morgan Keller
- + Harris Smariga

BEST WASHINGTON/BALTIMORE MID-RISE APARTMENT COMMUNITY



THE POINT AT RIDGELINE

Herndon, VA

- + Trammell Crow Residential
- + Panco Management
- + Dwell Design Studio
- + Santander
- + Diamond Realty Partners



1331

Washington, DC

- + Republic Properties
- + Bozzuto Management
- + Robert A.M. Stern Architects
- + WDG Architecture
- + WDG Interior Architecture
- + Lee and Associates Inc.
- + Akseizer Design Group
- + Pacific Western Bank
- + Parse Capital



LIBERTY HARBOR EAST

Baltimore, MD

- + Harbor East Management Group
- + Bozzuto
- + Hickok Cole





MAREN

Washington, DC

- + MRP Realty
- + FRP Development Corp.
- + KETTLER
- + SK+I Architecture
- + Carlyn & Co.
- + Paradigm Contractors

BEST SALES PACE FOR A WASHINGTON/BALTIMORE CONDOMINIUM COMMUNITY



DELTA ASSOCIATES'

Market Overview & Awards For Excellence



801 N

Washington, DC

- + The Holladay Corporation
- + McWilliams | Ballard
- + Cunningham & Quill
- + United Bank

BEST WASHINGTON/BALTIMORE BOUTIQUE CONDOMINIUM COMMUNITY



DELTA ASSOCIATES'

Market Overview & Awards For Excellence



WATERMARK

Alexandria, VA

- + The IDI Group Companies
- + McWilliams | Ballard
- + Rust Orling Architecture
- + Post Modern Landscape Architecture, LLC
- + Polished Interior Design Studio
- + Sandy Spring Bank
- + John Moriarty of Virginia
- + Christopher Consultants



BEST WASHINGTON LOW-RISE CONDOMINIUM COMMUNITY



DELTA ASSOCIATES'
Market Overview & Awards For Excellence



BONEVAL

Washington, DC

- + Community Three
- + Urbanace
- + Torti Gallas + Partners
- + General Design
- + EagleBank

BEST BALTIMORE LOW-RISE CONDOMINIUM COMMUNITY



DELTA ASSOCIATES'

Market Overview & Awards For Excellence



WEST 141

Annapolis, MD

- + Bozzuto Homes
- + BKV Group



BEST WASHINGTON/BALTIMORE MID-RISE CONDOMINIUM COMMUNITY



DELTA ASSOCIATES'

Market Overview & Awards For Excellence



PERLA

Washington, DC

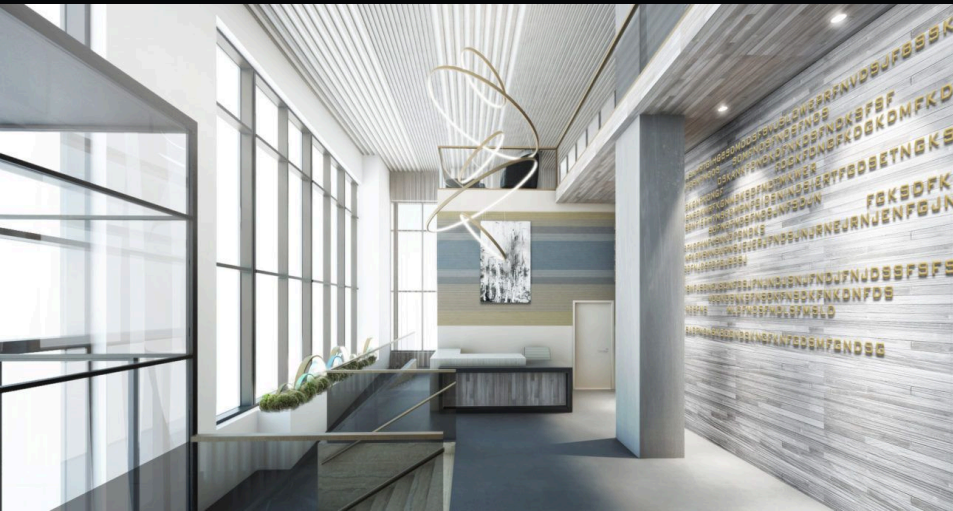
- + Four Points LLC
- + Greencourt Capital
- + McWilliams | Ballard
- + WDG Architects
- + Esocoff/Gensler

BEST WASHINGTON/BALTIMORE HIGH-RISE CONDOMINIUM COMMUNITY



DELTA ASSOCIATES'

Market Overview & Awards For Excellence



LIBERTY HARBOR EAST

Baltimore, MD

- + Harbor East Management Group
- + Bozzuto
- + Hickok Cole



BEST WASHINGTON/BALTIMORE CONDOMINIUM COMMUNITY



DELTA ASSOCIATES'
Market Overview & Awards For Excellence



VERSE

Tysons, VA

- + The Meridian Group
- + KETTLER
- + The Mayhood Company
- + Shalom Baranes Associates
- + Cecconi Simone
- + LDI
- + Pacific West
- + Canyon Partners
- + Streetsense
- + Vika